



Headspace Vials and Closures

Beveled-neck headspace vials are available in both 10 mL and 20 mL capacities, flat or rounded bottom. The 20 mm crimp caps provide a consistently secure seal. Agilent also offers cost-saving convenience packs with vials, caps and septa packaged together.

- Certified for full warranted compatibility with Agilent autosamplers
- Choice of crimp or screw top vials
- Beveled top for maximum secure seal
- Two neck lengths available
- Choice of a pressure safety release cap at 45 psi
- Available in flat or rounded bottom designs



Certified Headspace Crimp Top Glass Vials

| Description | Unit | Flat Bottom | Rounded Bottom |
|---|--------|-------------|----------------|
| 10 mL, 23 x 46 mm | | | |
| Clear | 100/pk | 5182-0838 | 5183-4475 |
| Amber | 100/pk | 5067-0227 | 5190-2238 |
| Clear, graduation marks and write-on spot | 100/pk | 5190-2285 | |
| Amber, graduation marks and write-on spot | 100/pk | 5190-2287 | |
| 20 mL, 23 x 75 mm | | | |
| Clear | 100/pk | 5182-0837 | 5183-4474 |
| Amber | 100/pk | 5067-0226 | 5190-2239 |
| Clear, graduation marks and write-on spot | 100/pk | 5190-2288 | |
| Amber, graduation marks and write-on spot | 100/pk | 5190-2286 | |



Clear headspace crimp top vials with graduation marks and write-on spot, 5190-2285



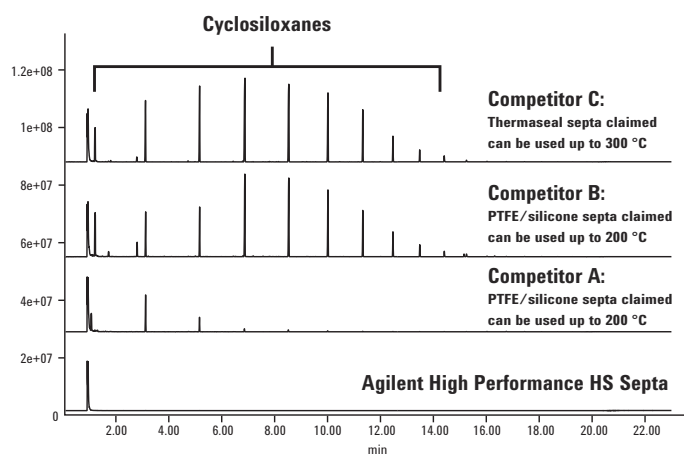
Amber headspace crimp top vials with graduation marks and write-on spot, 5190-2288

High Performance Septa

Agilent introduces the first septa that can withstand extreme temperatures and conditions for today's demanding headspace applications.

- Proven to withstand temperatures up to 300 °C with no degradation
- Leakproof
- Available in your choice of crimp or screw

Headspace screw top vial blank chromatogram comparison at 300 °C with different septa

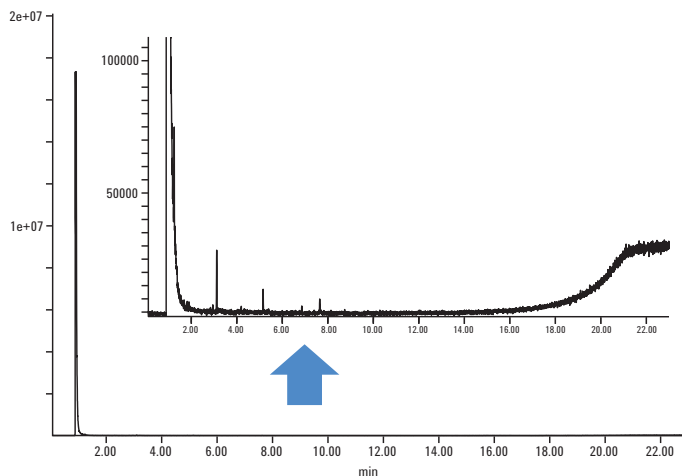


GC/MS conditions

| | |
|---------------------------------|--|
| Inlet: | Split mode w/ 10:1 ratio, 250 °C |
| Column: | DB-5ms Ultra Inert, 30 m x 0.25 mm, 0.25 µm, Constant flow: 2.5 mL/min |
| Oven: | 40 °C hold 1.5 min, then 15 °C/min to 325 °C and hold for 2.5 min, 23 min total run time |
| Thermal Aux/MS source/MS guard: | 250 °C/230 °C/150 °C |
| MSD: | Scan mode 25 - 550 m/z |

Vial blank sample chromatogram at 300 °C with Agilent High Performance HS Septa

Agilent High Performance Septa provide significant cleaner blank background at high temperature HS testing. Even with small abundance scale, the 300 °C vial blank chromatogram with High Performance Septa only shows few siloxane peaks with very small abundance.



Headspace conditions

| | |
|--------------|---|
| Septa Type: | Agilent High Performance Septa, 5190-3986 |
| Temperature: | Oven/loop & valve/transfer line: 300 °C/300 °C/300 °C |
| Times: | GC cycle time: 32 min, Vial equilib time: 30 min |
| Vial: | Fill pressure: 15 psi, Fill flow: 50 mL/min, Loop fill ramp rate: 20 psi/min, Loop final pressure: 10 psi, Vial Size: 20 mL, Shaking: 1 |
| Carrier: | GC controlled |

TIPS & TOOLS



For information on CrossLab High Performance Septa, turn to page 41-42.

High Performance Septa

| Description | Unit | Agilent Certified Part No. | Compatible With |
|---|--------|----------------------------|--|
| 18 mm steel screw cap with High Performance Septa | 100/pk | 5190-3986 | 5188-2753, 5188-6537, 5188-5392, 5188-6538 |
| 20 mm steel crimp cap with High Performance Septa | 100/pk | 5190-3987 | 5182-0837, 5183-4474, 5067-0226, 5190-2239, 5182-0838, 5183-4475, 5067-0227, 5190-2238 |

20 mm Headspace Crimp Caps and Septa

| Cap Color | Septa Type | Specifications | Certified | 100/pk | 10,000/pk |
|-------------------------------------|-------------------------------|------------------|-----------|-----------|-----------|
| Silver aluminum | PTFE/silicone septa | -60 °C to 180 °C | ✓ | 5183-4477 | 5190-2257 |
| Silver aluminum with safety feature | PTFE/silicone septa | -60 °C to 180 °C | ✓ | 5183-4478 | |
| Silver aluminum | Molded PTFE/ butyl septa | -40 °C to 125 °C | ✓ | 5183-4479 | 5190-2258 |
| Silver aluminum with safety feature | Molded PTFE/ butyl septa | -40 °C to 125 °C | | 5183-4480 | |
| Silver aluminum | No septa | | | 9301-0721 | |
| Silver aluminum with safety feature | No septa | | | 9301-0718 | |
| Septa only | Gray PTFE/ black butyl molded | -40 °C to 125 °C | | 9301-0976 | |
| Septa only | Tan PTFE/ white silicone | -60 °C to 180 °C | | 9301-0719 | 5067-0234 |



Aluminum crimp caps, 5183-4477



Headspace vial convenience kit

Certified Headspace Vial Convenience Packs

| Septa Type | Vial Type | Cap Color | Specifications | Unit | Part No. |
|--------------------------------|-------------|-------------------------------------|----------------|--------|-----------|
| Molded PTFE/ black butyl septa | Flat bottom | Silver aluminum with safety feature | < 125 °C | 100/pk | 5182-0839 |
| PTFE/silicone septa | Flat bottom | Silver aluminum with safety feature | < 180 °C | 100/pk | 5182-0840 |

TIPS & TOOLS



For information on CrossLab Headspace Vial Convenience Packs, turn to pages 40-42.

CombiPAL Headspace Vials and Closures

Screw top vials and caps are recommended for the tightest seal and the most reproducible headspace results. CombiPAL headspace vials and caps are precision-threaded, making them an excellent choice for dependability and ease-of-use. They are ideal for applications in the environmental, food and beverage, industrial hygiene, drug analysis, and clinical chemistry industries.

CombiPAL Headspace Screw Top Vials

| Description | 100/pk |
|--------------------------|-----------|
| 10 mL, 23 x 46 mm | |
| Clear | 5188-5392 |
| Amber | 5188-6538 |
| 20 mL, 23 x 75 mm | |
| Clear | 5188-2753 |
| Amber | 5188-6537 |

CombiPAL 18 mm Screw Top Caps with Septa

| Cap Color | Septa Type | 100/pk |
|---------------------------|--|-----------|
| Silver aluminum, magnetic | PTFE/silicone septa (top white, bottom blue) | 5188-2759 |

