



Walk-in Chambers



REMI Walk in chambers are designed for simulating, monitoring & control of environmental conditions like temperature & humidity. All these chambers are double walled & modular in construction, easy to assemble at site. They are available in standard sizes & can also be tailor made to suit specific requirements. Forced air circulation with the help of fan blower maintains uniform conditions. Use of intelligent control systems & dedicated REMI *'Datasoft'* software complying to 21 CFR Part 11 requirements greatly enhances the performance. These chambers can be provided with standby refrigeration & humidity systems (optional) for uninterrupted functioning.

CONSTRUCTION • Double walled prefabricated modular panels with PUF insulation, easy to assemble at site • Standard model with inner of Stainless Steel (304 Grade) and outer Powder coated steel sheet • GMP model with inner (316 Grade) and outer of Stainless Steel (304 Grade) • CFC free Refrigeration system with split type condensing unit located outside lab helps to emit hot air beyond working area • Heating by long lasting SS tubular heaters • Humidity by steam injection. Boiler and water reservoir made of SS with heater and low water level cut off • Forced Air Circulation by heavy duty motor • SS racks and trays

Performance

- Designed as per ICH guidelines to meet, WHO and USFDA requirement
- Fulfills storage conditions of 25°C-60% RH, 40°C-75% RH, 30°C-65% RH, 25°C-40% RH, 30°C-35% RH
- Temperature Range: 20°C to 60°C, Accuracy: $\pm 0.2^\circ\text{C}$, Uniformity: $\pm 1^\circ\text{C}$ (STABILITY CHAMBERS)
- Humidity range: 40% RH to 95% RH, Accuracy: $\pm 2\%$ RH, Uniformity: $\pm 3\%$ RH (STABILITY CHAMBERS)
- Temperature Range: 2°C to 8°C, Accuracy: $\pm 0.2^\circ\text{C}$, Uniformity: $\pm 1^\circ\text{C}$ (COLD ROOMS)
- Standby refrigeration system available for uninterrupted functioning (Optional)
- Standby humidity system available for uninterrupted functioning (Optional)

Leading Technology

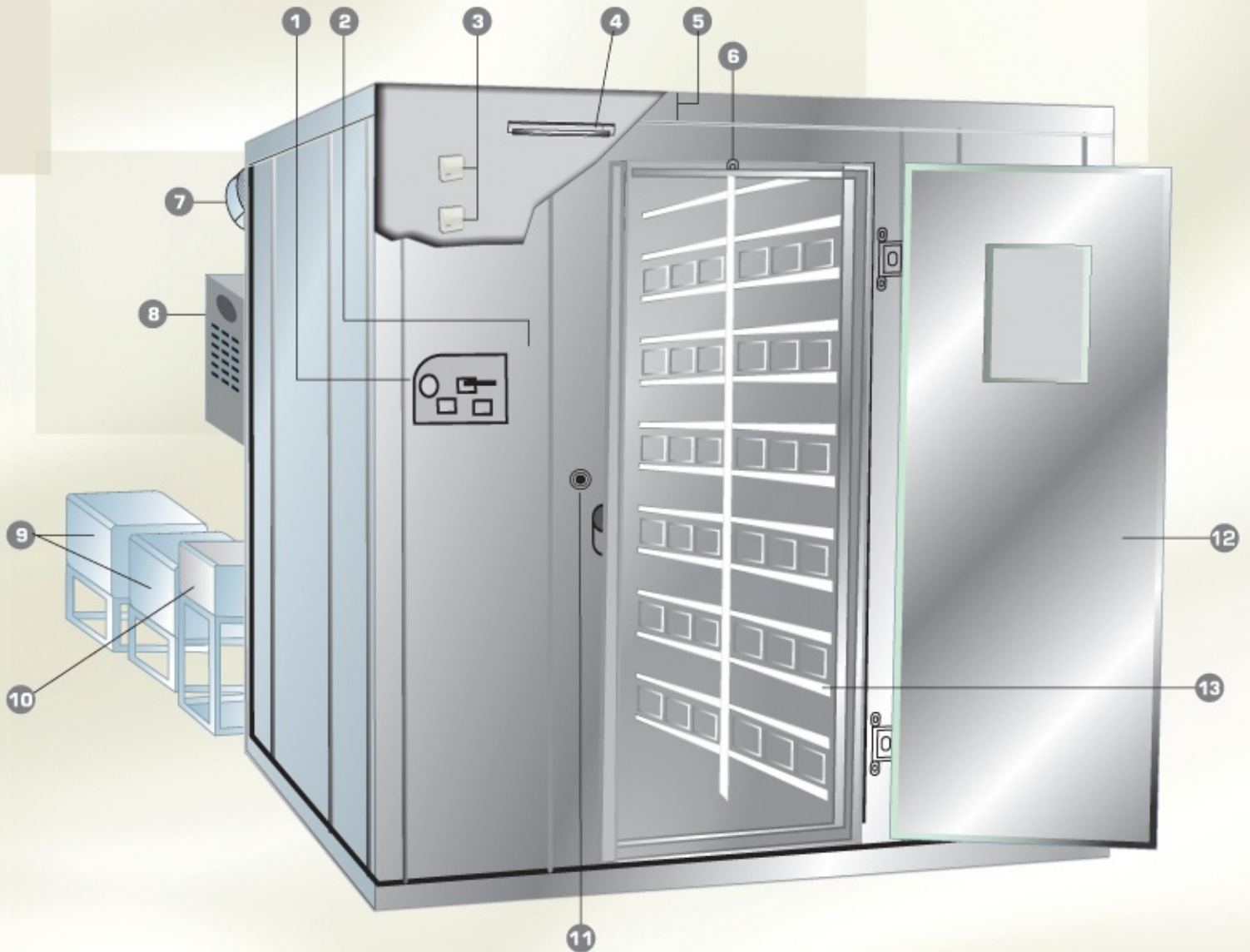
- Microprocessor based auto tuning PID controller for precise control of temperature and humidity
- Auto change over to standby systems through PLC (Optional)
- Auto switch over to standby sensor in case of Controlling Sensor failure
- PLC with touch screen HMI fully protected with password, instead of PID controller for precise control of temperature and humidity (optional)
- Data stored in PC server with LAN connectivity and password protection (Optional with software)
- GSM mobile alert on six cell phones via SMS in case of temperature and humidity deviations beyond specified Limits (Optional with software)

User Friendly

- Capacitance type Humidity sensor enables direct display of RH and temperature (STABILITY CHAMBERS)
- PC communication via Ethernet/RS-485 and software complying to 21CFR part 11 USFDA guidelines (Optional)
- Multipoint Temperature and Humidity logger with printout facility (optional)
- Facility to open the door from inside in case of door locked with emergency bell having switch inside chamber
- Thirty chambers connected to one software.
- Integration with BMS

Safety

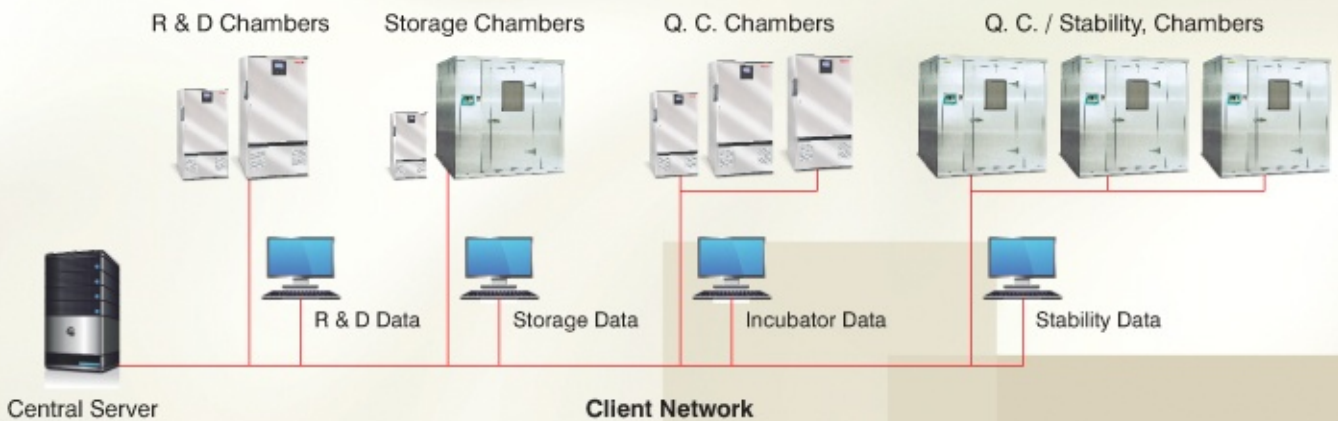
- Audio visual alarm for temperature, humidity variations and utility failures
- Output for remote alarm in lab and at security gate
- Magnetic door lock system with biometrics for door access and software to monitor door open log (Optional)
- Electrical circuit breaker
- Safety includes shut off of humidity and air heaters in case of temperature overshoots or undershoots beyond specified limits with alarms
- Low water level alarm and power cut off of boiler tank heater
- Overload cut off relay for compressor
- Time delay for compressor switch on



- 1 Intelligent PLC/PID control system helps maintain highly accurate set parameters
- 2 Biometrics system for secured door access
- 3 Dual Capacitance type Humidity Sensors failure of one sensor automatically transfers regulation to other sensor
- 4 Chamber illumination by fluorescent tubes
- 5 PUF Insulation 80 mm for maximum thermal protection
- 6 Spring Door Latch for door closure
- 7 Blower Motor for forced air circulation
- 8 Control panel with Data-logger, PC connectivity and electrical components
- 9 Standby refrigeration by Compressor-1 and Compressor-2
- 10 Standby humidity by Heater-1 and Heater-2
- 11 Emergency bell switch to open the door from inside
- 12 Highly ergonomic handle with unique multi lever key lock
- 13 SS Racks and Trays

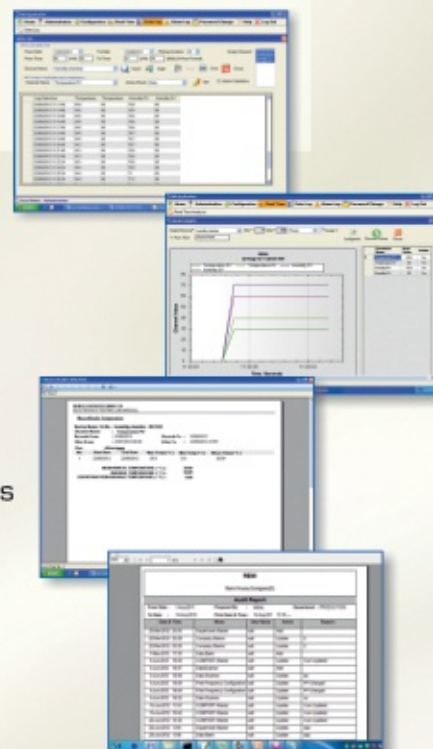


CHAMBERS CONNECTIVITY CHART



Features of Remi *Datasoft* Software complying to 21 CFR Part 11

- Multiple level alpha numerical passwords with password ageing
- Electronic signature
- Secured audit trail report
- Alarm report with mention of alarm condition
- Mean Kinetic Temperature, can be calculated for user defined period
- Reports in graphical and tabular form
- Data stored in PC server with LAN connectivity, accessible on any PC with password authentication
- Blocked user access after three unsuccessful login attempts
- Multi chamber data acquisition on single software supports 30 machines
- Supports communication through Ethernet / RS-485
- Supports web based online remote access via Ethernet
- GSM mobile alert on six cell phones via SMS in case of deviations
- Biometrics system for door access by authorized person with log
- Possible to integrate with BMS
- Online and offline Trends



TECHNICAL DATA

WALK-IN STABILITY CHAMBERS WALK-IN COLD ROOM	WSC-50	WSC-80	WSC-100	WSC-120	WSC-150
	WCR-50	WCR-80	WCR-100	WCR-120	WCR-150
Internal Volume (Liters)	5000	8000	10000	12500	15000
Number of Shelves	16	24	32	48	48
Internal Dimensions W x D x H (mm)	1250 x 2000 x 2000	2000 x 2000 x 2000	2000 x 2000 x 2500	2000 x 2500 x 2400	2500 x 2500 x 2400
External Dimensions W x D x H (mm)	1410 x 2950 x 2160	2160 x 2950 x 2160	2160 x 2950 x 2660	2160 x 3450 x 2560	2660 x 3450 x 2560
Internal Body Material	Stainless Steel 304 grade (Standard Models), Stainless Steel 316 grade (GMP Models)				
External Body Material	Powder Coated CRCA Steel (Standard Models), Stainless Steel 304 grade (GMP Models)				
Insulation	80 mm minimum, CFC free polyurethane foam				
Illumination	Fluorescent Tubes				
Control & Display	Microprocessor based PID control system with large 4" LCD Display				
Power Failure Alarm	Audio Visual Alarm				
Door Open Alarm	Audio Alarm in case door open for over one minute				
Electrical	220-240 volts, 50Hz, Single Phase				

	Walk-In Stability Chambers	Walk-In Cold Rooms
Sensor	Capacitance type direct reading	PT-100
Temperature Range & Accuracy	20°C to 60°C, ± 1°C	2°C to 8°C, ± 1°C
Humidity Range (RH) & Accuracy	40% to 95%, ± 3% RH	xx
Audio Visual Variation Alarm	Set Humidity ± 3% RH, Set Temperature ± 2°C	Set Temperature ± 2°C

Note : Specifications are Subject to change without prior notice.

OPTIONAL ACCESSORIES

- PLC Based Control System with HMI Touch Screen Mono lit
- Software compliant to 21 CFR Part 11 requirements
- Data logger with 8 / 16 Sensors (4+4 / 8+8 Temperature and Humidity)
- Standby Refrigeration System
- Standby Humidity System
- Biometrics Magnetic Door Access for Secured Door opening with software to maintain log
- GSM Mobile Alert for six Numbers

Other Product

- Photo Stability Chambers
- Cold Cabinets
- Ultra Low Freezers
- Bench Top Centrifuges
- Rotary Shakers
- Magnetic Stirrers
- Cooling Incubators
- Orbital Shaking Incubators
- Deep Freezers
- Refrigerated Centrifuges
- Laboratory Stirrers
- Vortex Mixers

REMI GROUP

Corporate Marketing Office
REMI SALES & ENGINEERING LTD.

Remi House, 3rd floor, 11, Cama Industrial Estate, Walbhat Road, Goregaon (East), Mumbai - 400 063. INDIA.
Tel.: +91 22 4058 9888 / 26851998 Fax: +91 22 40589890 E-mail: sales@remilabworld.com

Manufacturing Plant
REMI ELEKTROTECHNIK LTD.

Bldg "B", Survey No 65 / 1, Village - Valiv, Vasai (East), Dist. Thane - 401208. INDIA. Tel: +91 250 6456181 - 88 Fax: +91 250 2454493

www.remilabworld.com

BRANCHES**AHMEDABAD**

22, Nathalal Colony, Near Sardar Patel Colony, Stadium Road, Naranpura, Ahmedabad - 380 013.
Tel.: +91 79 2640 3235, 3294 2703
Fax: +91 79 2646 4081
E-mail: instrumentshmd@remigroup.com

GOA

S-4, 2nd Floor, Vergincar Empressa, Opp. Saraswat Co-op. Bank, Margoa, Goa - 403 601.
Tel.: +91 832 271 3671
E-mail: goa@remigroup.com

KOLKATA

Bando House, 4th Floor, 29, Ganeshchandra Avenue, Kolkata - 700 013
Tel.: (033) 2211 6367, 3295 0245, 32567745/46 Fax: (033) 2211 7221
E-mail: instrumentkolkata@remigroup.com

NAGPUR

Saraf Court, Dhantoli, Nagpur - 440 012
Tel.: +91 712 244 3077, 301 3416
Fax: +91 712 244 8156
E-mail: remisalesngp@gmail.com

BENGALURU

2#8/1, 3rd Cross, Shamanna Garden, Adugodi Post, Bengaluru - 560 030
Tel.: +91 80 22224406, 22224423
3291 5496, Fax: +91 80 2225 5166
E-mail: instrumentbang@remigroup.com

HYDERABAD

H. No. 1-4-879/78, (MCH New No. 968), SBI Colony, Gandhinagar, St. No. 8, Bakaram, Hyderabad - 500 080
Tel.: +91 40 2754 6291, 2753 0217, 3294 7135 Fax: +91 40 2754 2646
E-mail: instrumenthyd@remigroup.com

KOCHI

Door No. 28/2391-D, Vihaan, Chilavannur, Kadesventhra PO, Kochi-682 020.
Tel.: +91 484 231 6938, 232 0464
Fax: +91 484 232 0468
E-mail: kochi@remigroup.com

NEW DELHI

B-25, Second Floor, B Block, Community Center, Janakpuri, New Delhi-110058
Tel.: +91 11 25573171, 25573172, 25573173, Fax: +91 11 25573170,
E-mail: instrumentdelhi@remigroup.com

CHENNAI

59, Anna Salai, Post Box No.: 3705, (Inside SVS Club Compound), Chennai - 600 002.
Tel.: +91 44 2851 8622, 2854 6356, 3295 1155 Fax: +91 44 2841 1952
E-mail: instrumentchennai@remigroup.com

INDORE

G-1, Royal Regency, Plot No. 377, Goyal Nagar, Madhavrao Sindhiya Square, Ring Road, Near Bank of Baroda, Opp. Anmol Motors, Indore - 452 001, M. P.
Tel No.: 0731-3299606
E-mail: indore@remilabworld.com

KANPUR

112/1-C, 1st Floor, Benajhabar Road, Swaroop Nagar, Kanpur - 208 002.
Tel.: +91 512 325 8726
E-mail: kanpur@remigroup.com